

A satellite map of Rochester, New York, showing the city and surrounding areas. The map includes labels for various locations such as Frisbee Hill Park, Braddock Bay Fish and Wildlife Management Area, Charlotte, Irondequoit, and the University of Rochester. Major roads like I-190 and I-490 are visible. The text 'Rochester: From an Industrial City to a Knowledge-Based Economy' is overlaid in large, bold, black font across the center of the map.

Rochester: From an Industrial City to a Knowledge-Based Economy

Cornell University
Patience Milrod
Eithel Manrique
Bárbara Marchiori de Assis

BAUSCH & LOMB OPTICAL CO.

— MANUFACTURERS OF —

MICROSCOPES, OBJECTIVES AND ACCESSORIES,

— "RAPID UNIVERSAL," "ALVAN G. CLARK," AND OTHER

PHOTOGRAPHIC + LENSES

AND

TIME AND INSTANTANEOUS SHUTTERS.



**Telescopes, Eye Glasses, Lenses and Large
Variety of Other Optical Instruments.**

FACTORY AND MAIN OFFICE,
531-543 NORTH ST. PAUL STREET,
ROCHESTER, N. Y.
P. O. Draw 292.

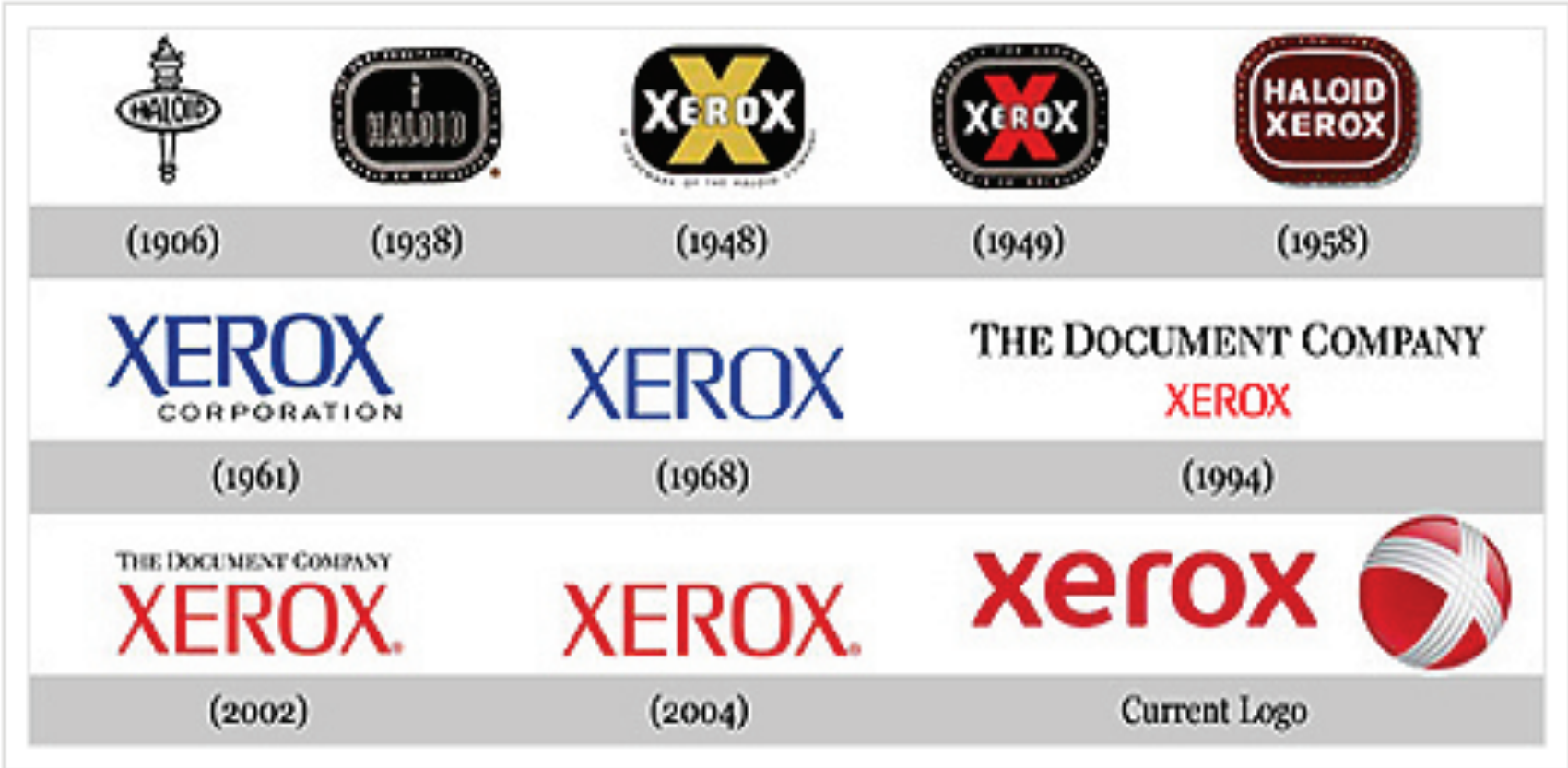
BRANCH OFFICE,
Nos. 48 and 50 MAIDEN LANE,
NEW YORK CITY,
P. O. Box 432.



1890s: Kodak employees in a penthouse on the roof of the State Street factory

Photograph: Bettmann/Corbis

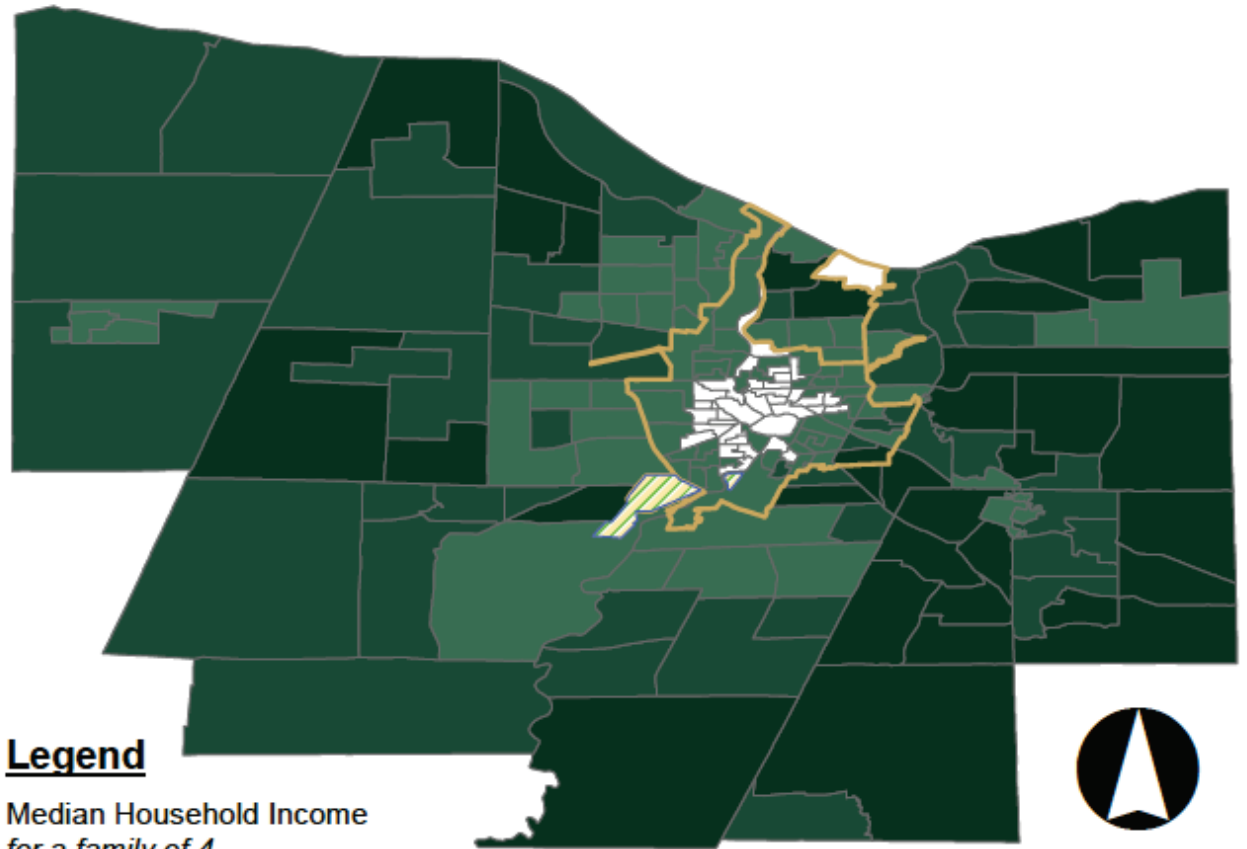
<http://www.theguardian.com/business/gallery/2012/jan/19/eastman-kodak-history-pictures#/?picture=384675819&index=18>







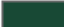



6 January 2012: One of several empty Kodak employee parking spaces in Rochester, New York

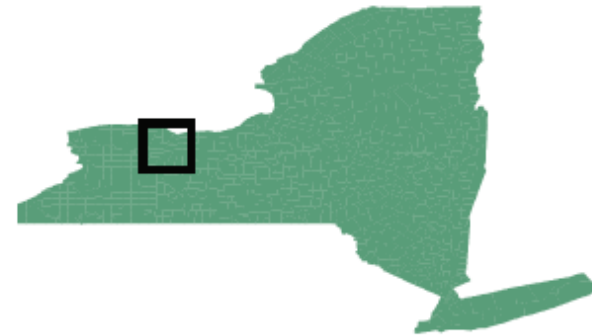
Photograph: David Duprey/AP



Legend

Median Household Income
for a family of 4

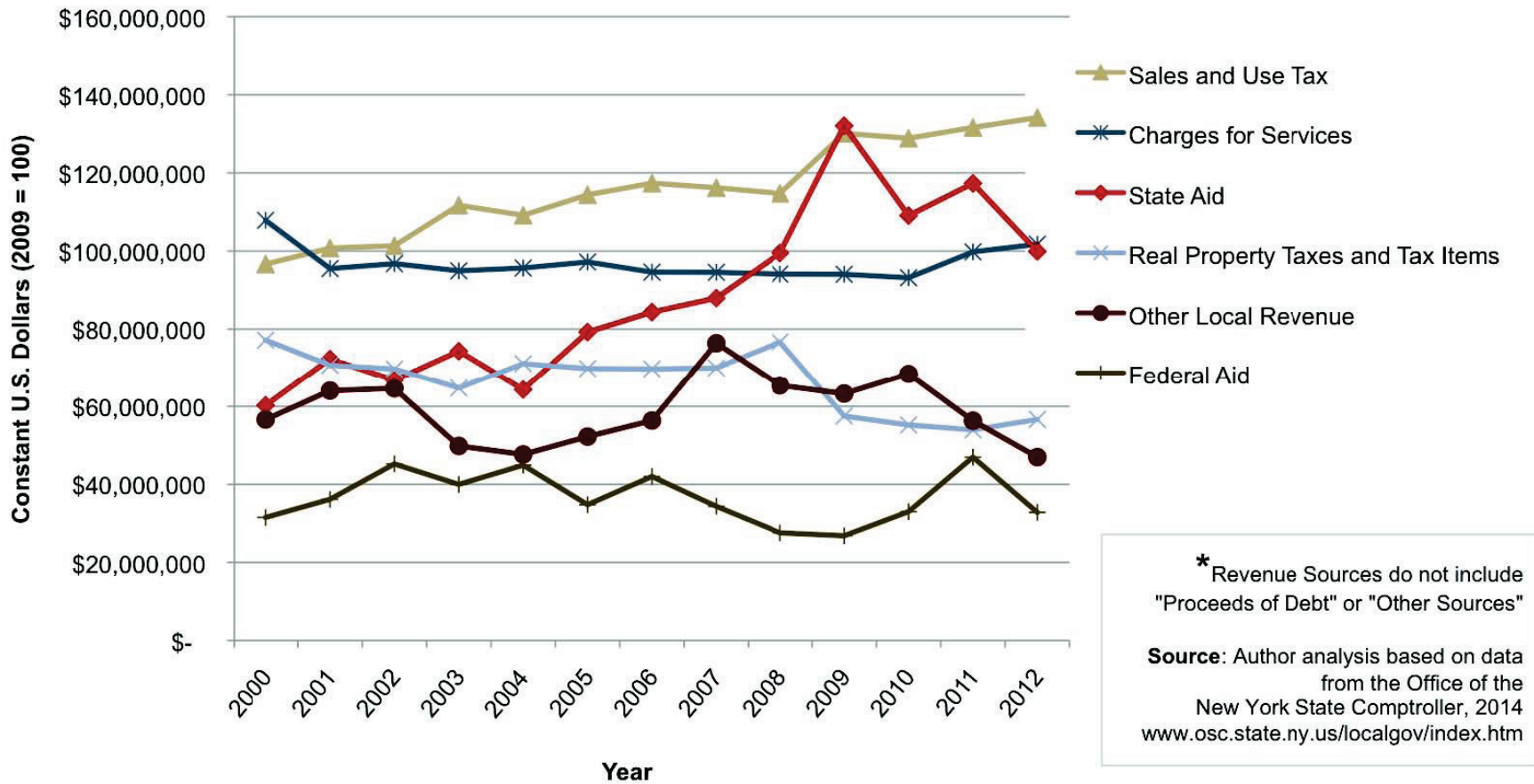
-  Below the Poverty Line (\$23,624)
-  \$23,624 - \$55,603
-  \$55,603 - \$74,134
-  \$74,134 - \$133,083
-  Data Not Available
-  City of Rochester Boundary



Created by: Clint McManus
 Date: 6 March 2014
 Data Source: U.S. Census Bureau, American Community Survey
 Projection: NAD 1983

City of Rochester Revenue Sources 2000-2012

Constant U.S. Dollars (2009 = 100)



LOCAL NEWS



Wednesday, February 26, 2014

Moody's gives Rochester bonds top rating

One of the two major investment rating agencies says Rochester city bonds are a safe investment.

Bud Lowell

Conservative fiscal management

- self-imposed debt limit
- protecting and building reserves
- hiring freeze
- amortizing pension payments
- capital project acceleration initiative

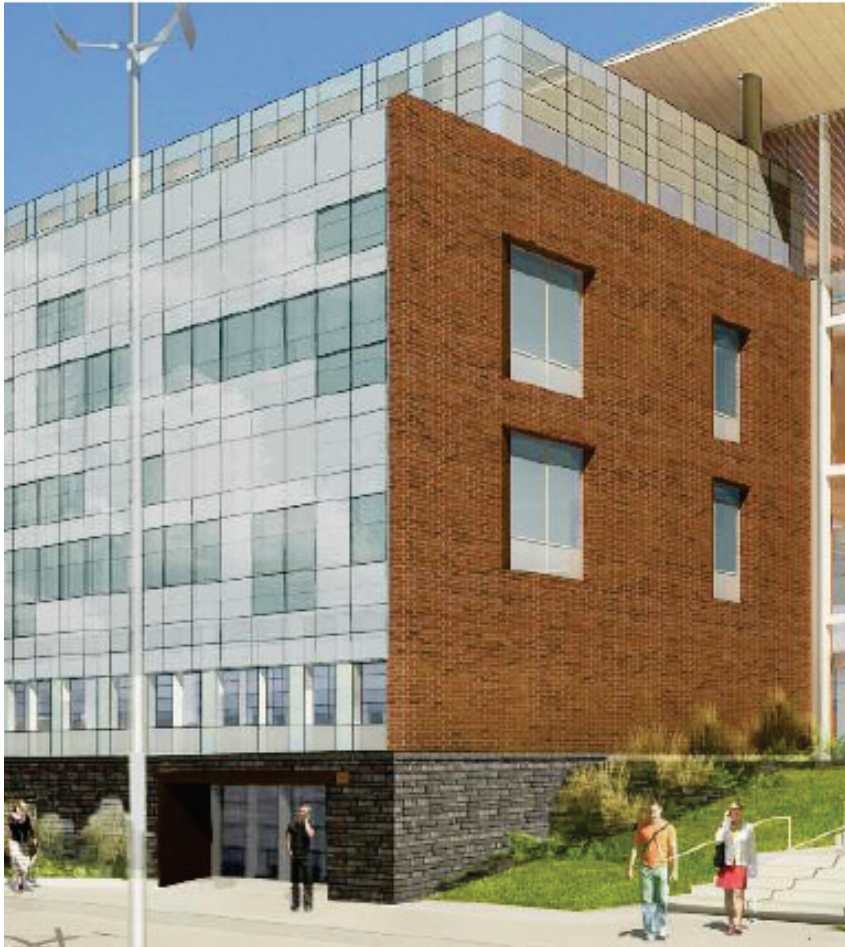
Strategic cost reductions: union health care costs



**Strategic cost reductions:
user fees shift costs to beneficiaries**



Innovative initiatives: Knowledge-based Economy



Golisano Sustainability Institute -- RIT



Health Sciences Center for Computational
Innovation

Innovative Initiatives: Commercial Investments



Midtown Rising project

Courtesy of Finger Lakes Regional Economic Development Council

Innovative Initiatives: Support for Small Businesses

**Focused
Investment
Strategy**

20% CDBG funds

3 - 4 year timeline

360° approach



Marketview Heights Neighborhood

Photo courtesy of Communications Bureau, City of Rochester NY

Innovative Initiatives: Neighborhood Revitalization



Photo courtesy of Michael Tomb

Joint Action with Stakeholders:

**CityGate Costco
Development with
Monroe County**

**Sharing Services with
Schools**

- Joint School Construction Board
- Shared Facilities—e.g., Ryan Center
- RCSD fueling stations serve fire trucks
- Equipment loans
- Downtown parking meters



Thank you

